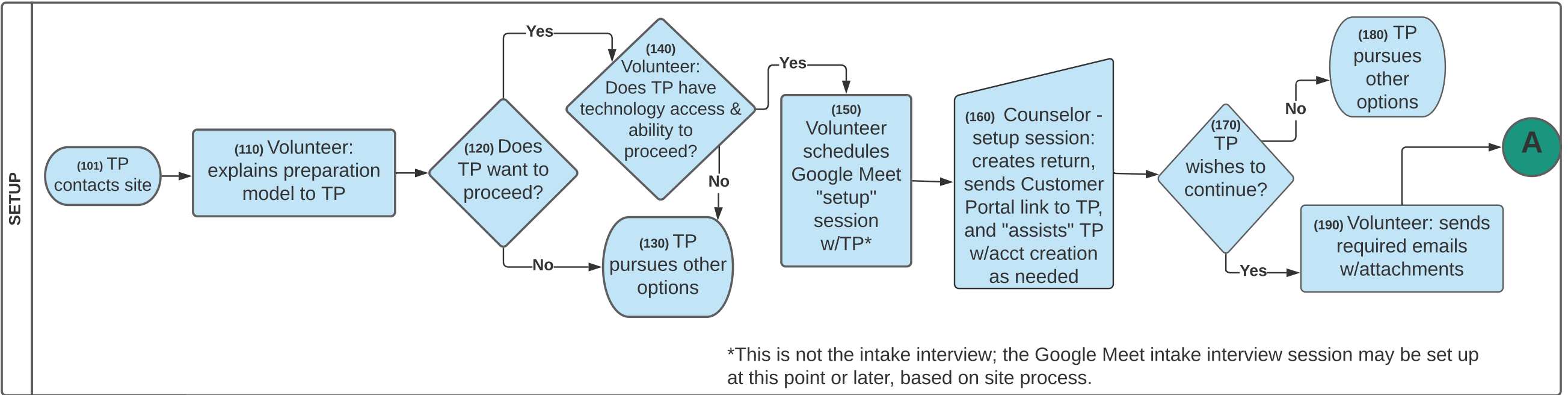
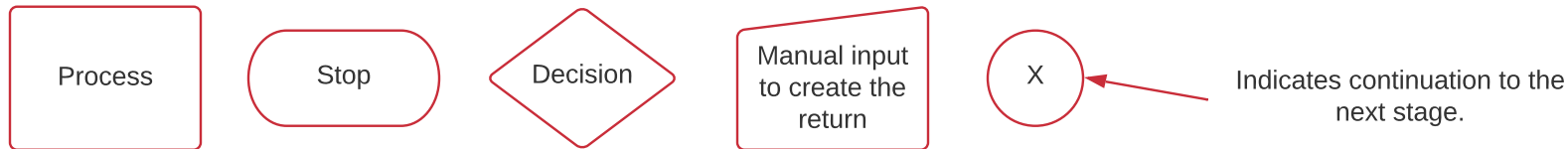


## No Site Visit Model (formerly No Contact)

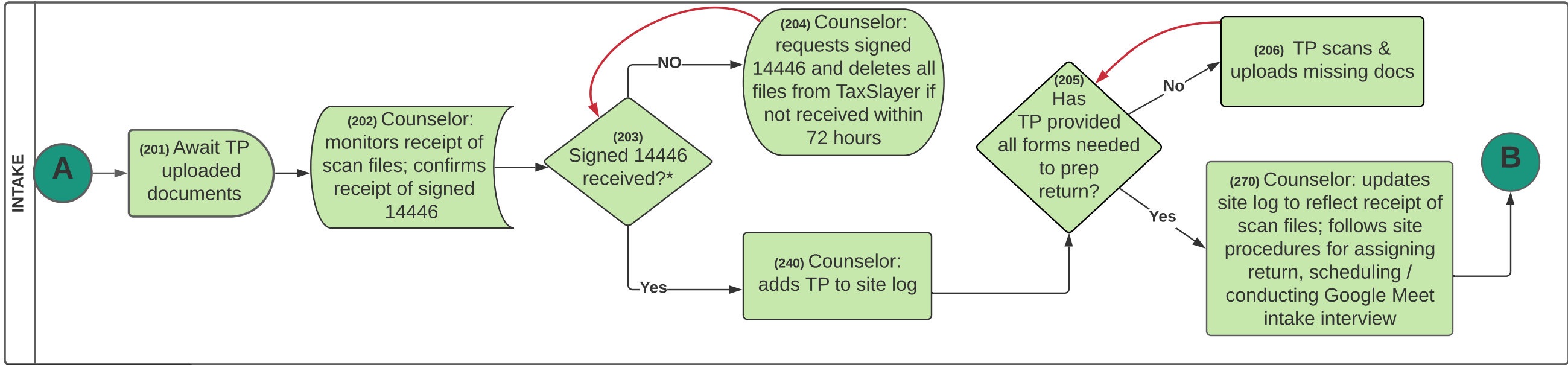


Sep 20, 2021 3:15 PM

### Guide to Symbols



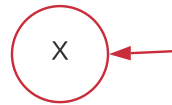
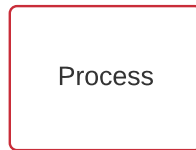
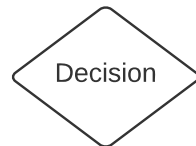
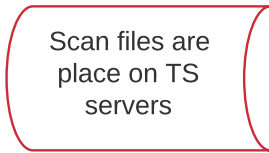
# No Site Visit Model (formerly No Contact)



Sep 20, 2021 3:15 PM

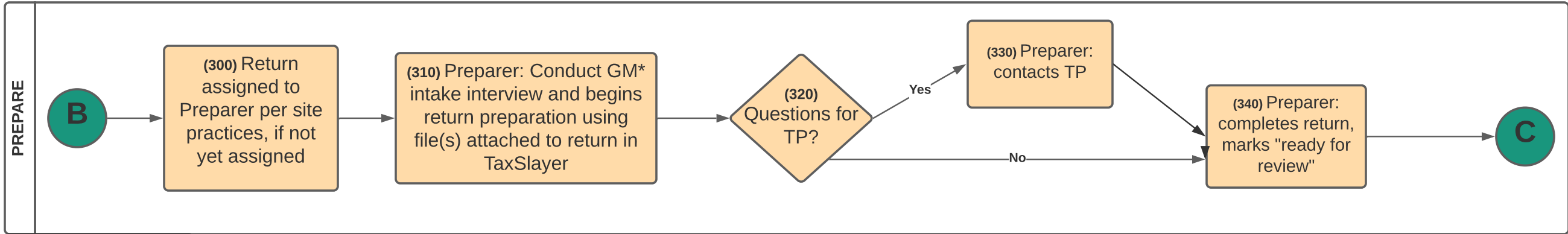
\*If a married filing joint return, 14446 must be signed by taxpayer AND spouse

## Guide to Symbols



Indicates continuation to the next stage

# No Site Visit Model (formerly No Contact)



Sep 20, 2021 3:15 PM

\*GM = Google Meet video conference

## Guide to Symbols

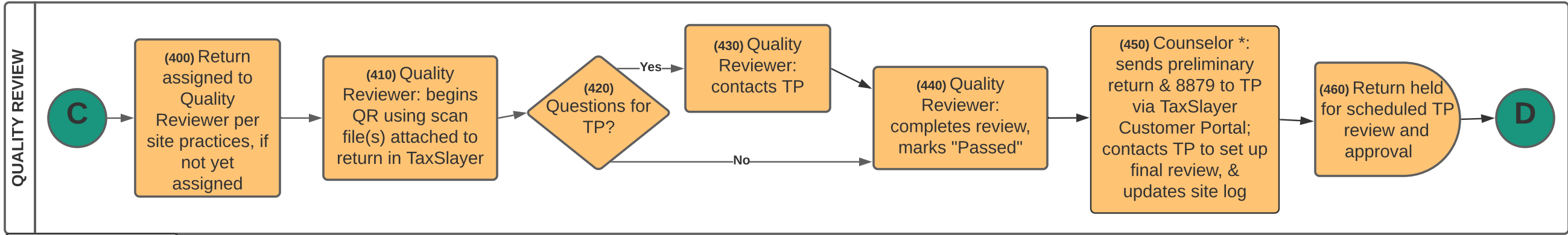
Process

Decision

X

Indicates continuation to the next stage

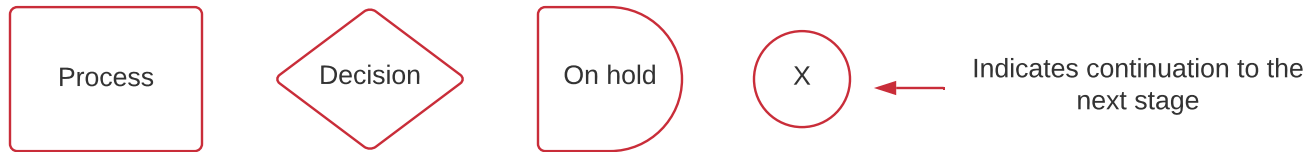
# No Site Visit Model (formerly No Contact)



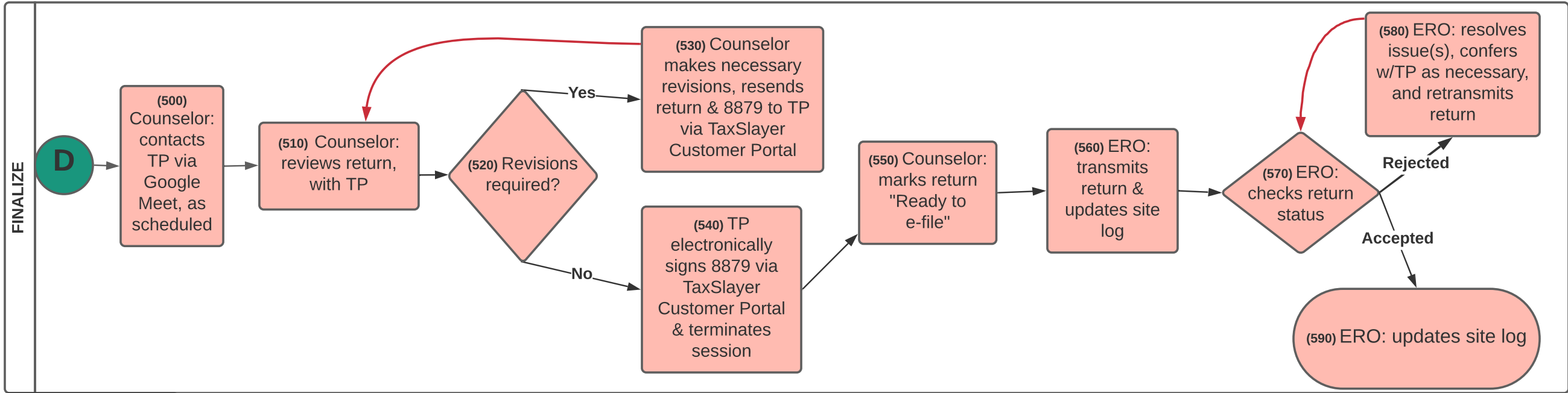
Sep 20, 2021 3:15 PM

\*This can be done by the Quality Reviewer or another Counselor.

## Guide to Symbols

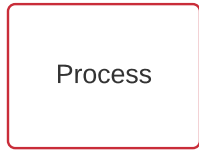


# No Site Visit Model (formerly No Contact)



Sep 20, 2021 3:15 PM

## Guide to Symbols



Process

Decision

Stop